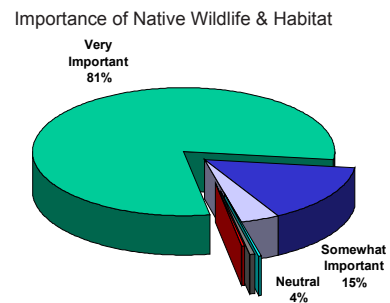
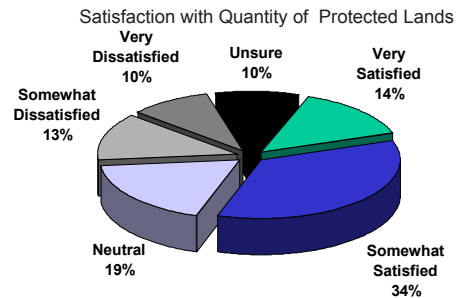


PARKS, RECREATION AND CULTURE STRATEGIC PLAN

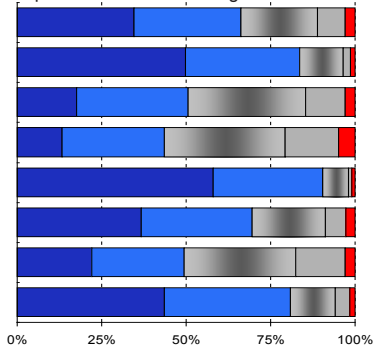
LEES+Associates were hired by Professional Environmental Recreation Consultants Ltd. (PERC) as subconsultant to prepare Parks component of Parks, Recreation and Culture Strategic Plan for City of Surrey.

This Parks chapter led to six strategic directions, detailed in recommendations, for how the Parks system could continue to improve the parks and open space system over the next 10 years. The strategies and recommendations are outlined below:

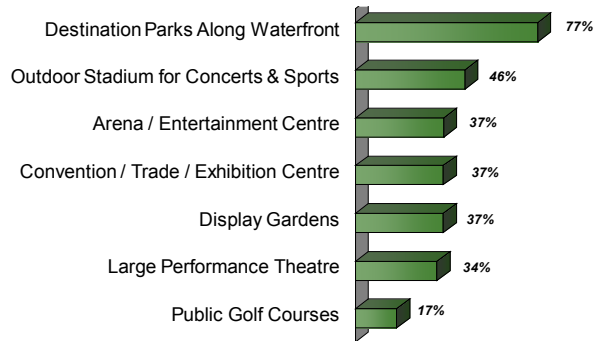
- Enhance System-wide Management Tools
- Re-invest in Parks Infrastructure
- Enhance Environmental Planning and Management
- Enhance Active Parks Programming and Facilities
- Park Development Means and Methods
- Complete Outstanding Projects.



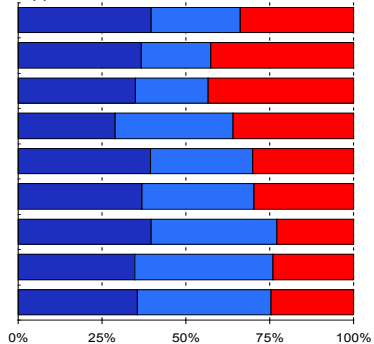
Parks, Recreation & Cultural Services How Important are the Following?



Regional Facilities. Additional Facilities in the Next 10 Years?



Parks, Recreation & Cultural Services Enough Opportunities/Services?



Parks, Recreation & Cultural Services Support for Funding Options?

