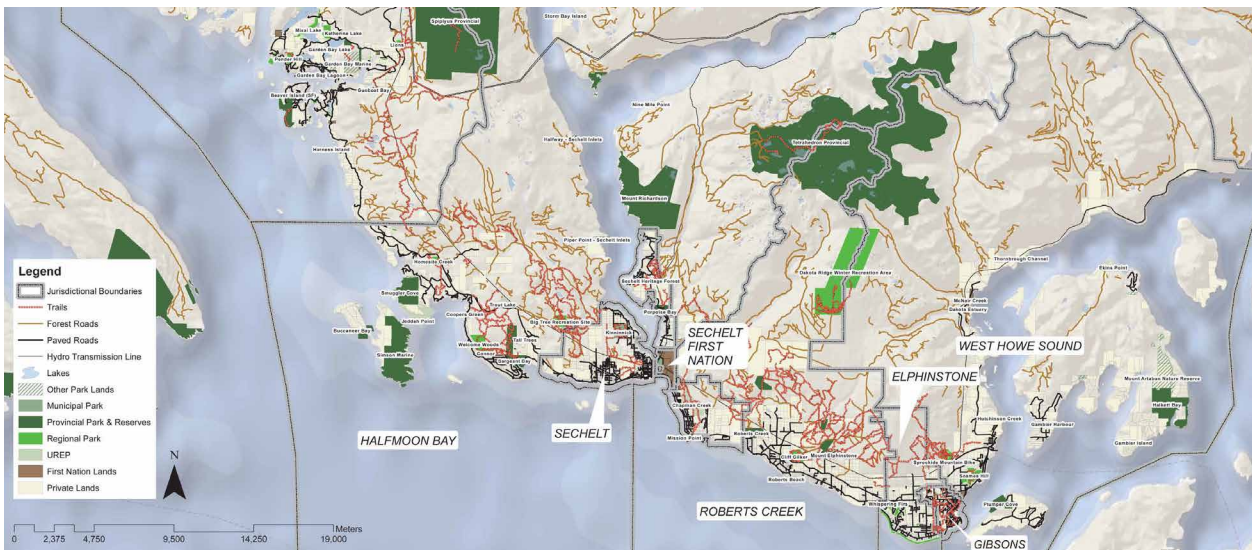


SUNSHINE COAST TRAILS STRATEGY

LEES+Associates and IMBA Canada developed a trail strategy for the Sunshine Coast Trail Society. Working closely with the not for profit organization, as well as local government agencies, the final plan presented the society with a mandate for trail development, maintenance and management of a sustainable trail network on the Lower Sunshine Coast Crown Land over the next decade.

The strategy represents a fundamental shift towards formally recognizing and valuing the lower Sunshine Coast trails network as a significant asset for locals and tourists, and includes the identification of key trail networks for which to prioritize legitimization and protection from environmental and human threats, as well as trail classification and signage direction. In a system with many different land managers, the Strategy also outlines a proposed distribution of implementation responsibilities.



TRAILS STRATEGY